

The  
Sherwin Miller  
Museum  
of Jewish Art



eMUSEletter

## HIGHLIGHTS AND UPCOMING EVENTS MAY 2014 - E-MUSE

[www.jewishmuseum.net](http://www.jewishmuseum.net)

918.492.1818

### In This Issue

[Groundbreaking Highlights](#)

[Theodore Fried](#)

[Tributes](#)

[Tours](#)

[Fig Cafe and Bakery](#)

[Museum Hours](#)



[to find out what is  
happening on the  
Jewish Community  
Campus!](#)

### Quick Links...

[Our Website](#)

[Facebook](#)

[Twitter](#)

[Tours](#)

[More About Us](#)

[Any Given Child](#)

[Moomat/APP](#)

[AAM](#)

## Highlights From The SMMJA Groundbreaking

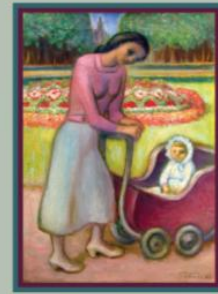




## THEODORE FRIED:

*Pivotal Moments In Twentieth Century Art*

*Opening Late May 2014*



Born at the beginning of an era in both art and politics, Theodore Fried was a talented young artist whose career intersected with the major movements in modern art during the twentieth century. From Paris in the 1920s to New York after WWII, Fried was a member of the School of Paris and the Society of Modern Painters and Sculptors in New York. The survival of his talent and vision continued in New York. After his safe arrival in 1942, Fried established a studio and began to rebuild a body of American works. Exploring subject matter in the City-Central Park, neighborhood life, Fried began to show his modern paintings in contemporary exhibitions, garnering fresh recognition of his figurative works and color compositions.

Following his death, he appointed a trust to perpetuate his work, and in 2004, the SMMJA received his estate. Now mounting the first extensive retrospective of his work, this original, self-curated show will demonstrate how Fried's work and life bridged the Holocaust experience and encompassed early to mid-twentieth century fine art, drawing from the large collection of original art work and other archival material.

---

## Tribute Recognitions

***Tributes are a meaningful way to honor a special occasion or to remember loved ones. Donations to The Sherwin Miller Museum of Jewish Art provide for permanent and traveling exhibitions and educational programs. Focusing on the***

***heritage, history and culture of the Jewish people, The Miller helps deepen perception and understanding through art.***

***In Memory of***

**Goldie Cash**

Carol Miller

***In Honor of***

**Irene Fenster**

Tubby Stayman

**Katherine Frame**

Sarah & John Graves

***Birthday***

**Lori Frank**

Nancy & Mark Lobo

**Selman Kremer**

Susan Fenster

***Mother's Day***

**Zella Borg**

**Estelle Fabes**

**Irene Fenster**

**Sallye Mann**

**Carol Miller**

**Rose Miller**

**Brina Reinstein**

**Isabel Sanditen**

**Jean Sanditen**

**Barbara Sylvan**

**Maxine Zarrow**

Susan Fenster

---

## Tours

There were eleven scheduled Docent led tours in the month of April. They were from Jenks High School, Travel Writers, Live, Laugh, Love Retired Teachers from Broken Arrow, SCAMPS/Wagoner ladies group, ORU, two tours for Leadership Tulsa, Haskell High School, Elder Care/Tulsa, Gypsy Schools/Depew, OK and the TTown Red Hat Divas. Total of students/teachers/chaperones (119) and total of adults in other tour groups (93).

*If you would like to book a docent-led tour or to check for an available date, please contact Volunteer Coordinator Cathey Wilson at 918.492.1818 or email her at [volunteer@jewishmuseum.net](mailto:volunteer@jewishmuseum.net).*

## Volunteer Opportunities

### Docents

A comprehensive training program prepares each docent to lead tours for both school groups and general audiences. Throughout the year, tours are scheduled at various times during the week and on Sundays, providing a flexible schedule for volunteers.

Docents take groups through exhibits related to the Holocaust, Jewish History and Culture, and the temporary art exhibits.

Anyone wishing to become a docent should contact Docent Chairman Stan Shapiro, Executive Director Drew Diamond, or Volunteer Coordinator Cathey Wilson at 918.492.1818. Those interested will be given an information manual regarding the Holocaust and Jewish History and Culture, and will need to be available to shadow docents leading tours and to

attend the art exhibit orientations with Dr. York, and monthly meetings of the Committee of Docents.

### **Front Desk Volunteers**

Consider volunteering to welcome and direct visitors to the Museum, answer phones and visitor inquiries. In addition, front desk volunteers help process admission and merchandise sales and assist staff with special events. Front desk shifts are normally three hours in length, and a variety of weekday or Sunday hours are available to volunteers, in rotation.

Volunteers perform numerous duties essential to the success of the Museum, helping avoid salary and labor costs often associated with day-to-day activities and exhibit installation. Training is provided to volunteers for areas throughout the Museum.

*If you're interested in volunteering for the Museum with other dedicated, caring, enthusiastic, and friendly volunteers and staff, please contact the Volunteer Coordinator Cathey Wilson at 918.492.1818 or email [volunteer@jewishmuseum.net](mailto:volunteer@jewishmuseum.net)*

---

## **Fig Cafe and Bakery**

Regular Hours of Operation

11:00 a.m. - 2:00 p.m.

Monday thru Friday

Now serving soups, salads,  
sandwiches & desserts

in the Lobby of the Charles Schusterman JCC

---

**Give the gift of membership**



**Birthdays, holidays, lifecycle events...  
great occasions to give a year of art, history, heritage & education!**

**Call the Museum today at 918.492.1818**



A partnership among Blue Star Families,  
the National Endowment for the Arts, and  
more than 1,000 museums across America

[arts.gov/bluestarmuseums](http://arts.gov/bluestarmuseums)

## **Museum Hours**

Monday-Friday, 10:00am - 5:00pm

Closed Saturday in observance of Shabbat

Sunday, 1:00pm - 5:00pm